

200V N-CHANNEL TRENCH POWER MOSFET

MAIN CHARACTERISTICS

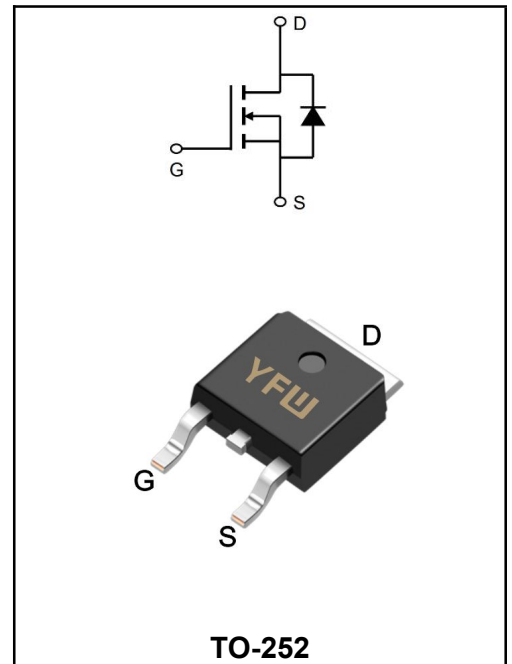
I_D	24A
V_{DS}	200V
R_{DS(on)-typ(@V_{GS}=10V)}	< 80mΩ (Typ: 64mΩ)

FEATURES

- ◆ High density cell design for ultra low R_{ds(on)}
- ◆ Fully characterized avalanche voltage and current
- ◆ Good stability and uniformity with high E_{AS}
- ◆ Excellent package for good heat dissipation
- ◆ Special process technology for high ESD capability

APPLICATIONS

- ◆ Power switching application
- ◆ Hard switched and high frequency circuits
- ◆ Uninterruptible power supply



Maximum Ratings at T_c=25°C unless otherwise specified

Characteristics	Symbol	Value	Unit
Drain-Source Voltage	V_{DS}	200	V
Gate-Source Voltage	V_{GS}	±20	V
Continue Drain Current	I_D	24	A
Drain Current-Continuous(T _c =100°C)	I_D	17	A
Pulsed Drain Current	I_{DM}	100	A
Power Dissipation	P_D	150	W
Single Pulse Avalanche Energy ^(Note5)	E_{AS}	250	mJ
Operating Temperature Range	T_J	175	°C
Storage Temperature Range	T_{STG}	-55 to +175	°C
Thermal Resistance, Junction to Case ^(Note 2)	R_{θJC}	1	°C/W

Maximum Ratings at Tc=25°C unless otherwise specified

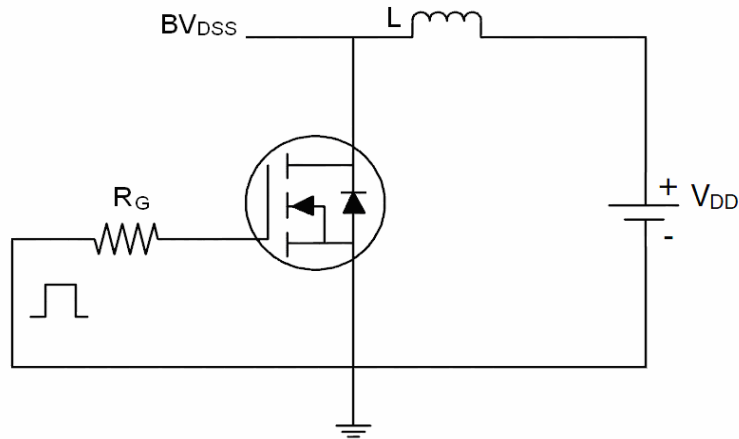
Parameter	Symbol	Condition	Min	Typ	Max	Unit
Drain-Source Breakdown Voltage	BV_{DSS}	V _{GS} =0V I _D =250μA	200	220	-	V
Zero Gate Voltage Drain Current	I_{DSS}	V _{DS} =200V, V _{GS} =0V	-	-	1	μA
Gate-Body Leakage Current	I_{GSS}	V _{GS} =±20V, V _{DS} =0V	-	-	±100	nA
Gate Threshold Voltage	V_{GS(th)}	V _{DS} =V _{GS} , I _D =250μA	2.5	3.2	4	V
Drain-Source On-State Resistance	R_{DS(ON)}	V _{GS} =10V, I _D =15A	-	64	80	mΩ
Forward Transconductance	g_{FS}	V _{DS} =50V, I _D =15A	30	-	-	S
Input Capacitance	C_{iss}	V _{DS} =25V, V _{GS} =0V, F=1.0MHz		4180		pF
Output Capacitance	C_{oss}			162		
Reverse Transfer Capacitance	C_{rss}			73		
Turn-on Delay Time	t_{d(on)}	V _{DD} =100V, I _D =15A V _{GS} =10V, R _{GEN} =2.5Ω	-	10	-	nS
Turn-on Rise Time	t_r		-	18	-	
Turn-Off Delay Time	t_{d(off)}		-	22	-	
Turn-Off Fall Time	t_f		-	5	-	
Total Gate Charge	Q_g	V _{DS} =100V, I _D =15A, V _{GS} =10V		60		nC
Gate-Source Charge	Q_{gs}			19		
Gate-Drain Charge	Q_{gd}			17		
Diode Forward Voltage (Note 3)	V_{SD}	V _{GS} =0V, I _S =11A	-	-	1.2	V
Diode Forward Current (Note 2)	I_S	-	-	-	24	A
Reverse Recovery Time	t_{rr}	T _J = 25°C, I _F = 15A di/dt = 100A/μs ^(Note3)	-	90	-	nS
Reverse Recovery Charge	Q_{rr}		-	300	-	nC
Forward Turn-On Time	t_{on}	Intrinsic turn-on time is negligible (turn-on is dominated by LS+LD)				

Notes:

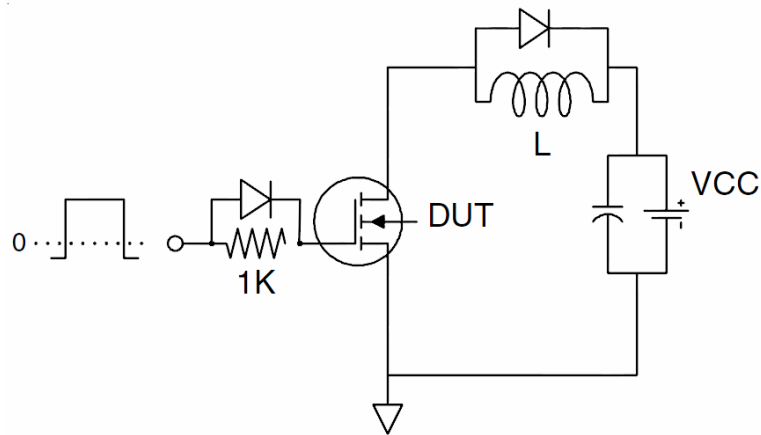
- 1.Repetitive Rating: Pulse width limited by maximum junction temperature.
- 2.Surface Mounted on FR4 Board, t ≤ 10 sec.
- 3.Pulse Test: Pulse Width ≤ 300μs, Duty Cycle ≤ 2%.
- 4.Guaranteed by design, not subject to production
- 5.EAS condition: T_J=25°C, V_{DD}=100V, V_G=10V, L=0.5mH, R_G=25Ω

Test Circuit

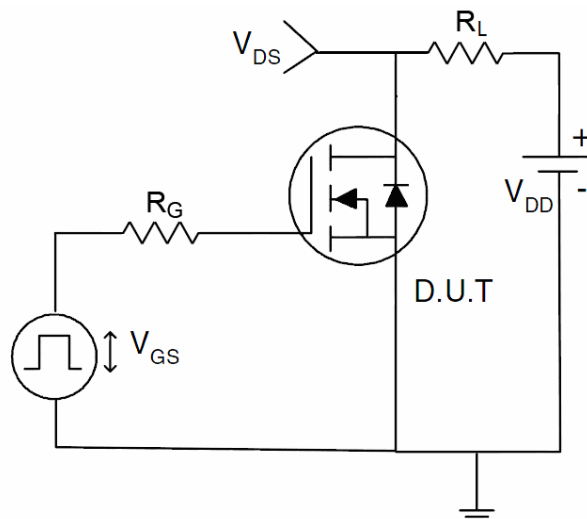
1) E_{AS} test Circuits



2) Gate charge test Circuit



3) Switch Time Test Circuit



Typical Electrical and Thermal Characteristics (Curves)

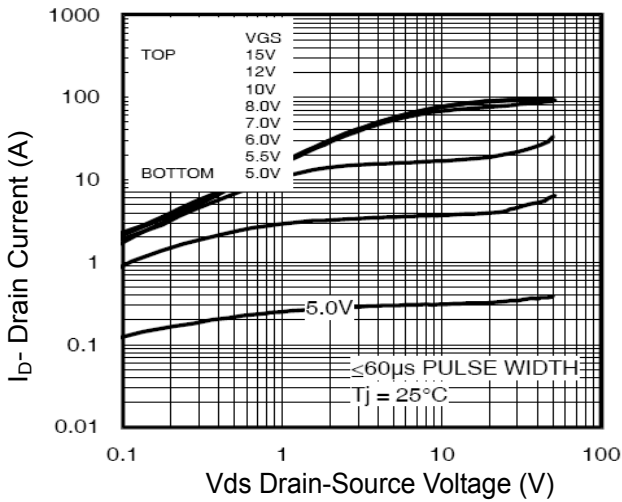


Figure 1 Output Characteristics

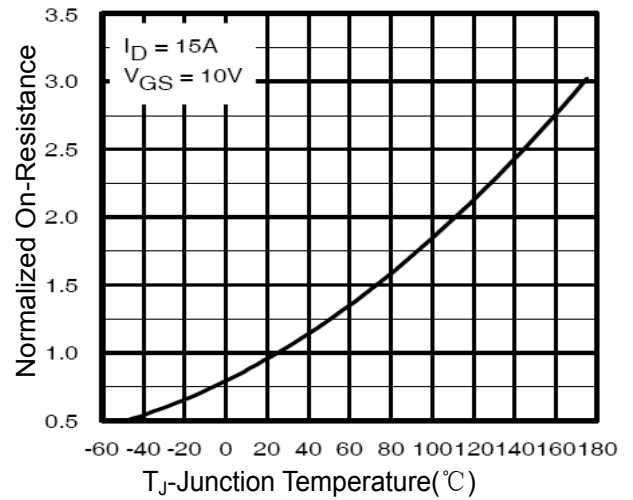


Figure 4 Rdson-Junction Temperature

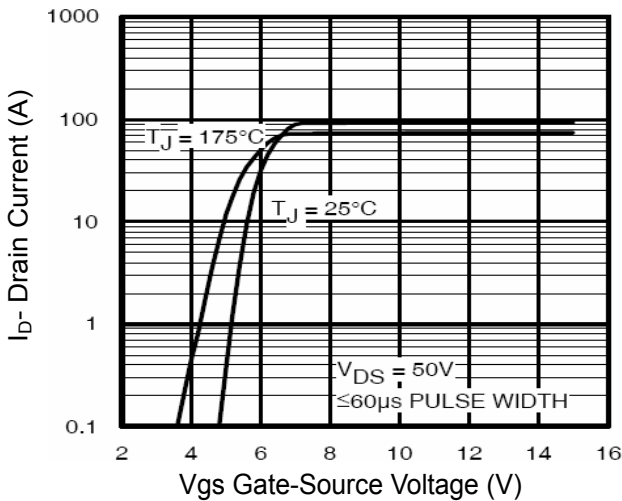


Figure 2 Transfer Characteristics

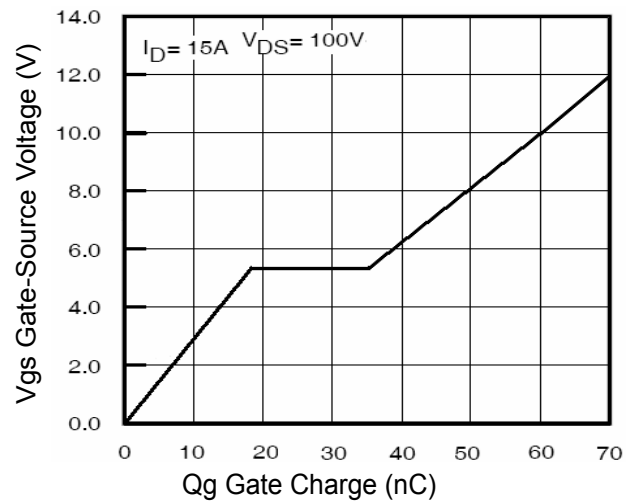


Figure 5 Gate Charge

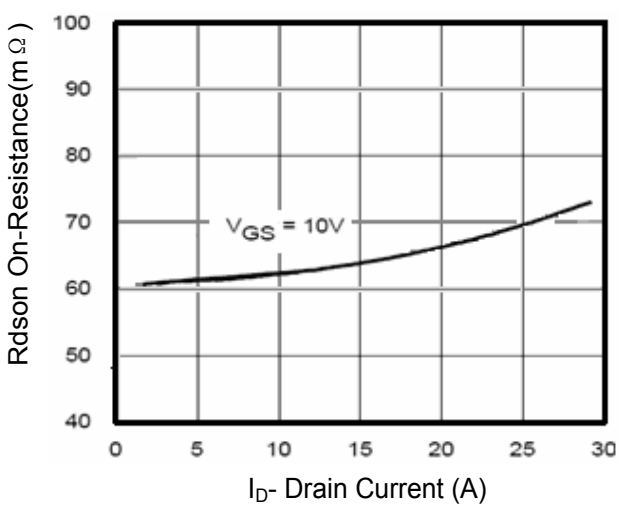


Figure 3 Rdson- Drain Current

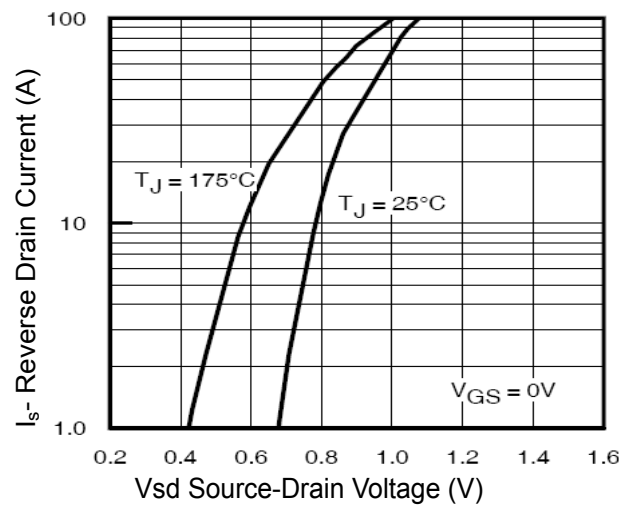


Figure 6 Source- Drain Diode Forward

Typical Electrical and Thermal Characteristics (Curves)

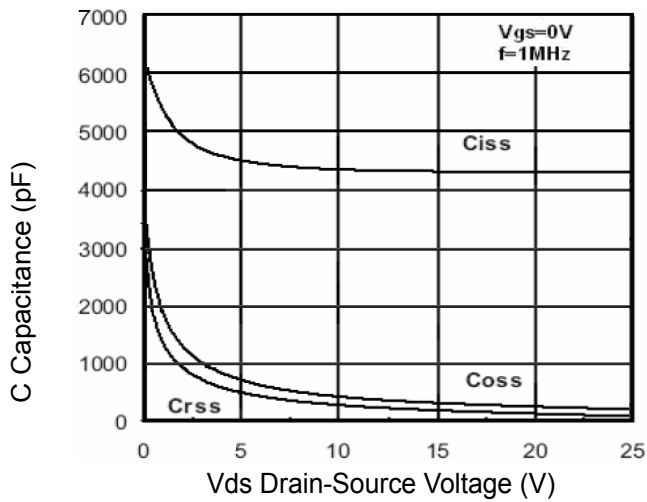


Figure 7 Capacitance vs Vds

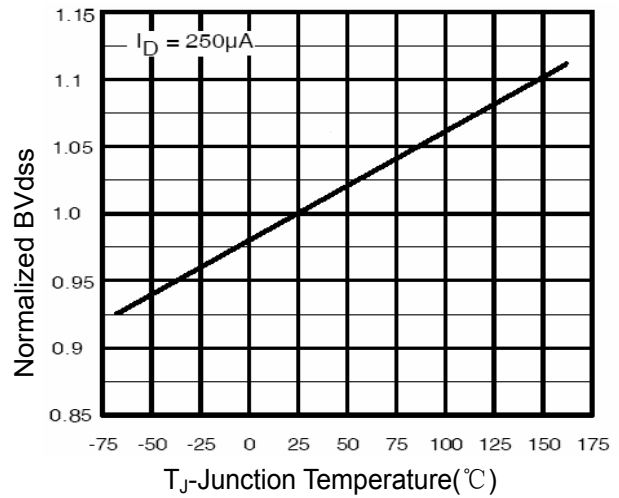


Figure 9 BV_{DSS} vs Junction Temperature

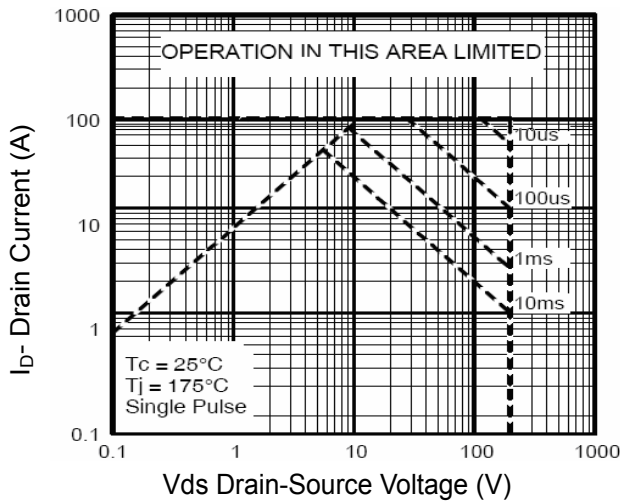


Figure 8 Safe Operation Area

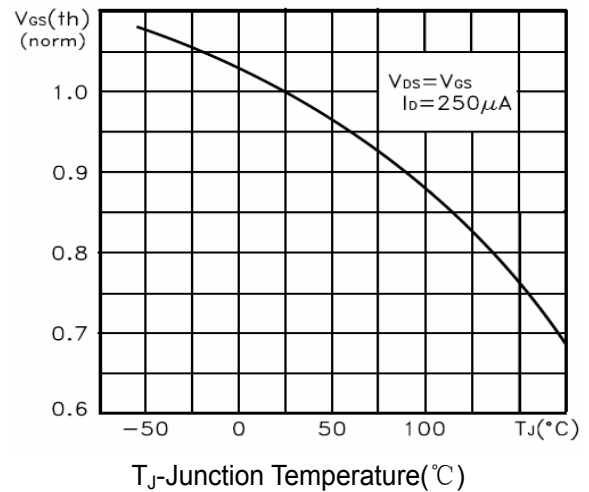


Figure 10 $V_{GS(th)}$ vs Junction Temperature

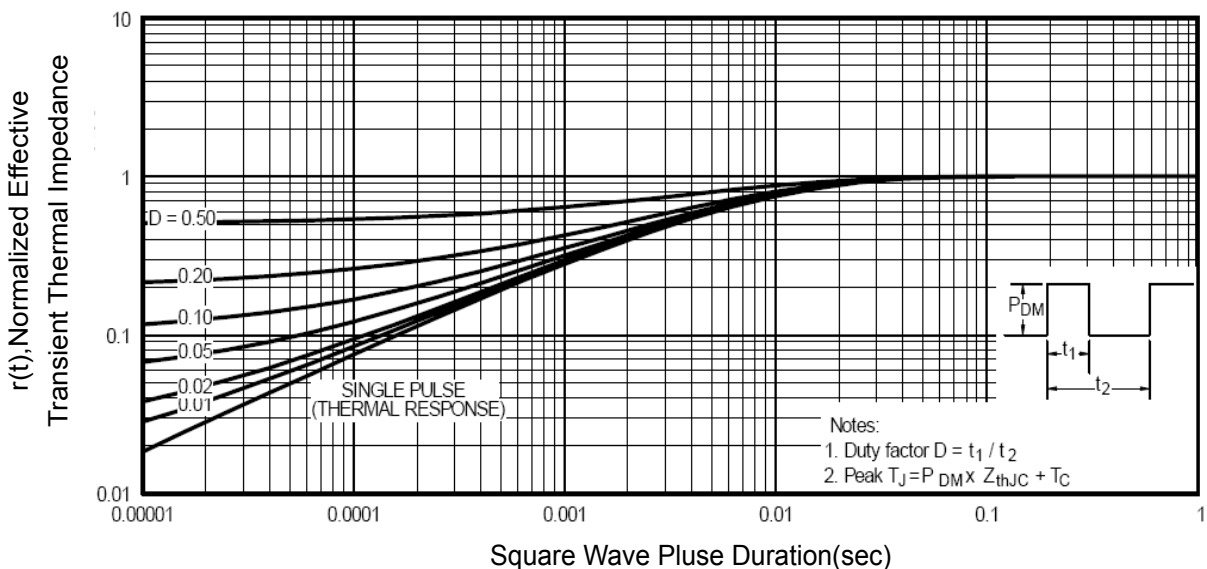
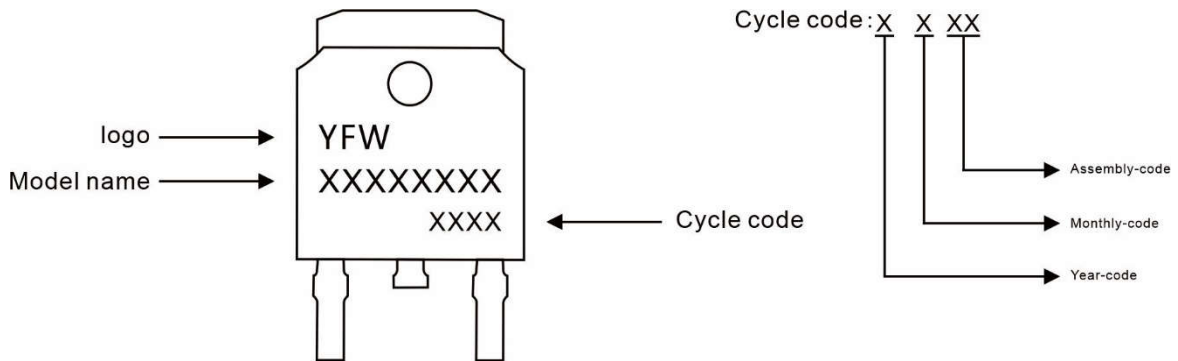


Figure 11 Normalized Maximum Transient Thermal Impedance

Marking Diagram



Ordering information

Model name	Package	Unit Weight	Base Quantity	Packing Quantity
YFW24N20AD	TO-252	0.011oz(0.32g)	2500pcs/reel	5000pcs/box 25000pcs/Carton

Package Dimensions

TO-252

Dim	Millimeter		Inches	
	Min.	Max.	Min.	Max.
A	2.20	2.50	0.087	0.098
A1	0.00	0.12	0.000	0.005
A2	2.20	2.40	0.087	0.094
B	1.20	1.60	0.047	0.063
b	0.50	0.70	0.020	0.028
b1	0.70	0.90	0.028	0.035
c	0.40	0.60	0.016	0.024
c1	0.40	0.60	0.016	0.024
D	6.35	6.65	0.250	0.262
D1	5.20	5.40	0.205	0.213
E	5.40	5.70	0.213	0.224
e	2.20	2.40	0.087	0.094
e1	4.40	4.80	0.173	0.189
L	10.00	11.00	0.393	0.433
L1	2.70	3.10	0.106	0.122
L2	1.40	1.80	0.055	0.071
L3	0.90	1.50	0.035	0.059

Disclaimer

The information presented in this document is for reference only. GuangDong Youfeng Microelectronics Co.,Ltd. reserves the right to make changes without notice for the specification of the products displayed herein to improve reliability, function or design or otherwise. The product listed herein is designed to be used with ordinary electronic equipment or devices, and not designed to be used with equipment or devices which require high level of reliability and the malfunction of which would directly endanger human life (such as medical instruments, transportation equipment, aerospace machinery, nuclear-reactor controllers, fuel controllers and other safety devices), YFW or anyone on its behalf, assumes no responsibility or liability for any damages resulting from such improper use of sale. This publication supersedes & replaces all information previously supplied. For additional information, please visit our website <https://www.yfwdiode.com>, or consult YFW sales office for further assistance.