

**Three Phase Glass Passivated Bridge Rectifier**

**Voltage - 1000 to 1600 V**

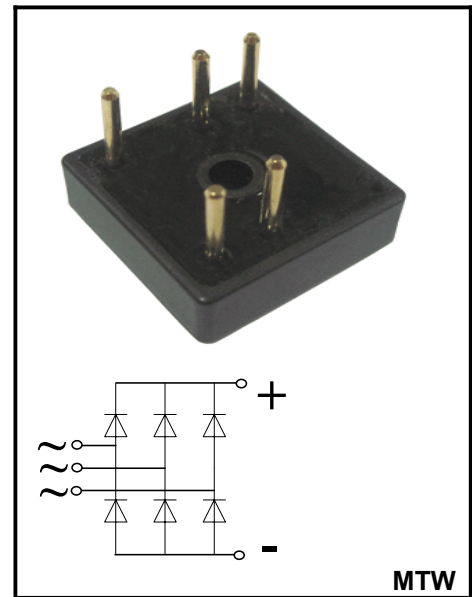
**Forward Current - 35A**

**FEATURES**

- ◆ Glass passivated chip
- ◆ Low reverse leakage current
- ◆ High surge current capability
- ◆ Compliant to RoHS directive 2011/65/EU

**MECHANICAL DATA**

- ◆ Case: MTW
- ◆ Terminals: Solderable per MIL-STD-202, Method 208

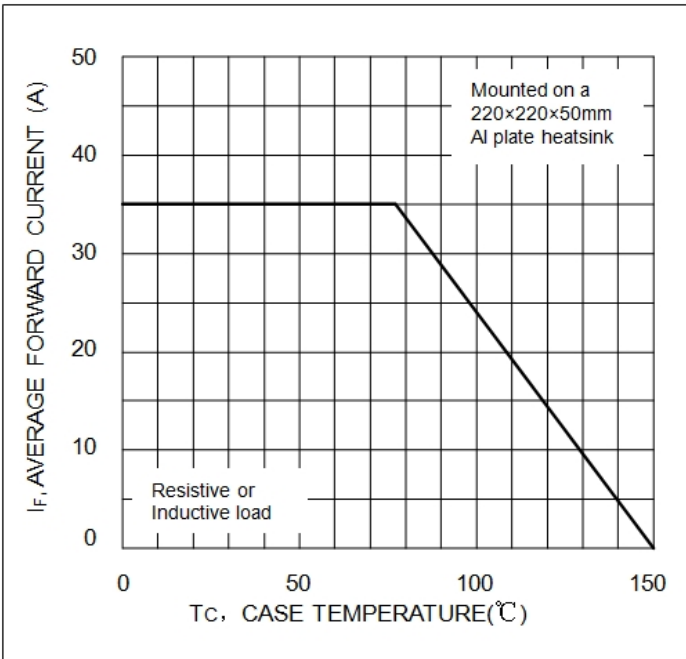


**Maximum Ratings Parameter @ Ta = 25C unless otherwise noted**

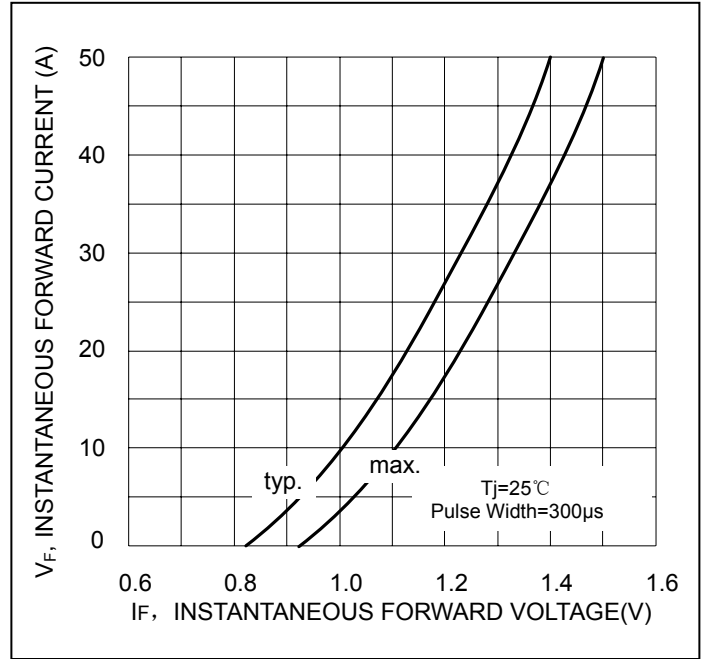
Parameter	Symbols	MT3510W	MT3512W	MT3514W	MT3516W	Units
Maximum Repetitive Peak Reverse Voltage	$V_{RRM}$	1000	1200	1400	1600	V
Average rectified output current	$I_{(AV)}$	35				A
Peak surge forward current, 8.3ms single half sine-wave superimposed on rated load	$I_{FSM}$	450				A
Rating for fusing, 1ms<t<8.3ms, Tj=25°C, Rating of per diode	$I^2t$	840				A <sup>2</sup> S
Junction temperature and Storage temperature	$T_j, T_{stg}$	-55~+150				°C
Dielectric strength, terminals to case AC 1 minute	<b>Vids</b>	2.5				KV
Peak Forward Voltage @If =17.5A	$V_F$	1.1				V
Peak Reverse Current VR=VRRM.Pulse measurement Rating of per diode	$I_R$	5 500				uA
Junction to ambient thermal resistance, without heatsink	$R_{\theta JA}$	28				°C/W
Junction to case thermal resistance, with heatsink	$R_{\theta JC}$	0.9 <sup>(1)</sup>				°C/W

Device mounted on 124mm x 71mm x 75mm Heat resistance meter radiator

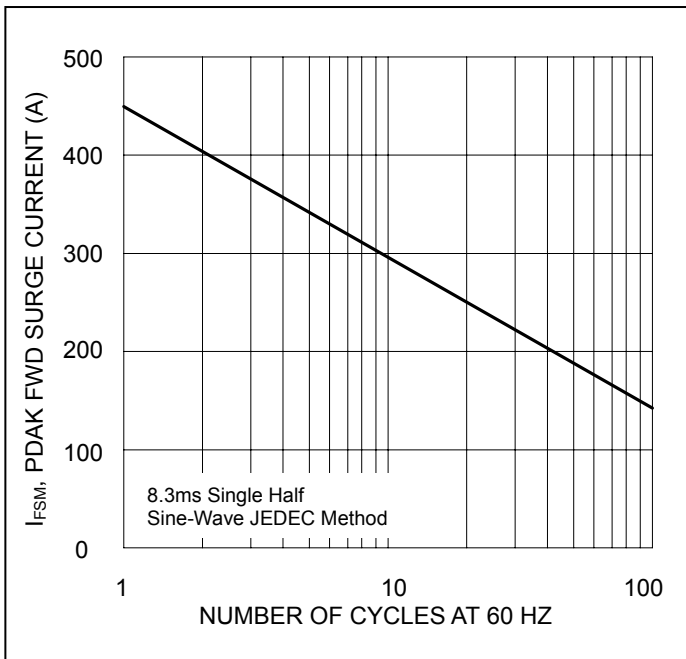
**Characteristics (Typical)**



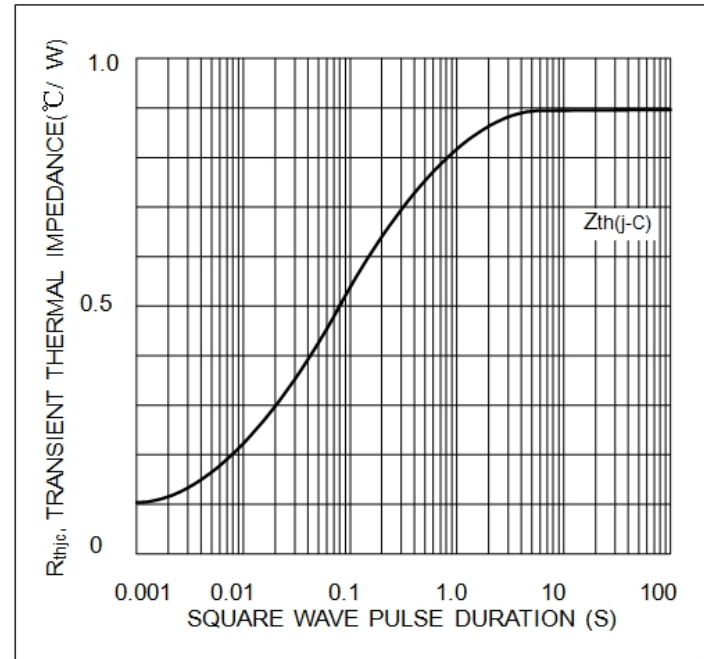
**Fig. 1 Forward Current Derating Curve**



**Fig.2 Typical Forward Characteristics**

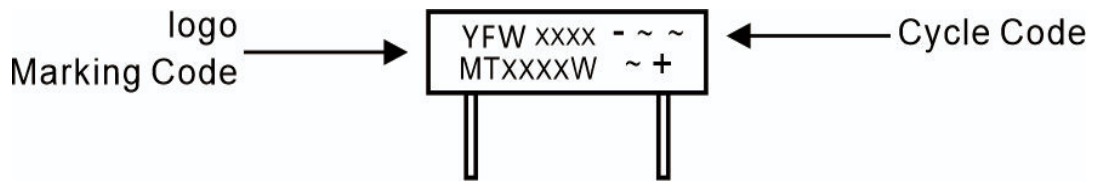


**Fig.3 Max Non-Repetitive Peak Surge Current**



**Fig4. Transient thermal impedance**

Marking Diagram

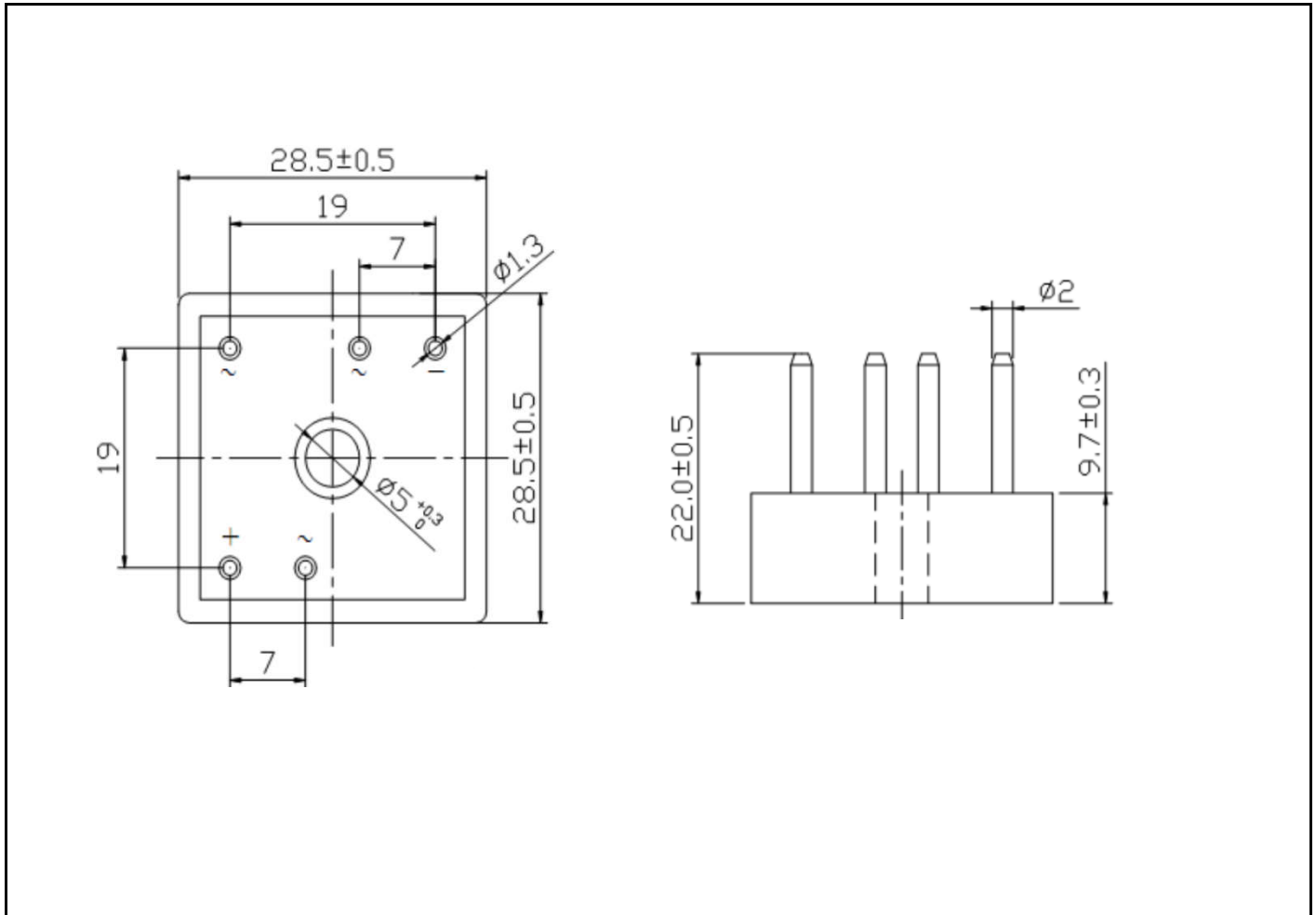


Ordering information

Package	Packing Description	Packing Quantity
MTW	bulk	50PCS/Box 500PCS/Carton

Package Dimensions

MTW (Dimensions in mm)



## Disclaimer

The information presented in this document is for reference only. GuangDong Youfeng Microelectronics Co.,Ltd. reserves the right to make changes without notice for the specification of the products displayed herein to improve reliability, function or design or otherwise. The product listed herein is designed to be used with ordinary electronic equipment or devices, and not designed to be used with equipment or devices which require high level of reliability and the malfunction of which would directly endanger human life (such as medical instruments, transportation equipment, aerospace machinery, nuclear-reactor controllers, fuel controllers and other safety devices), YFU or anyone on its behalf, assumes no responsibility or liability for any damages resulting from such improper use of sale. This publication supersedes & replaces all information previously supplied. For additional information, please visit our website <https://www.yfwdiode.com>, or consult YFU sales office for further assistance.